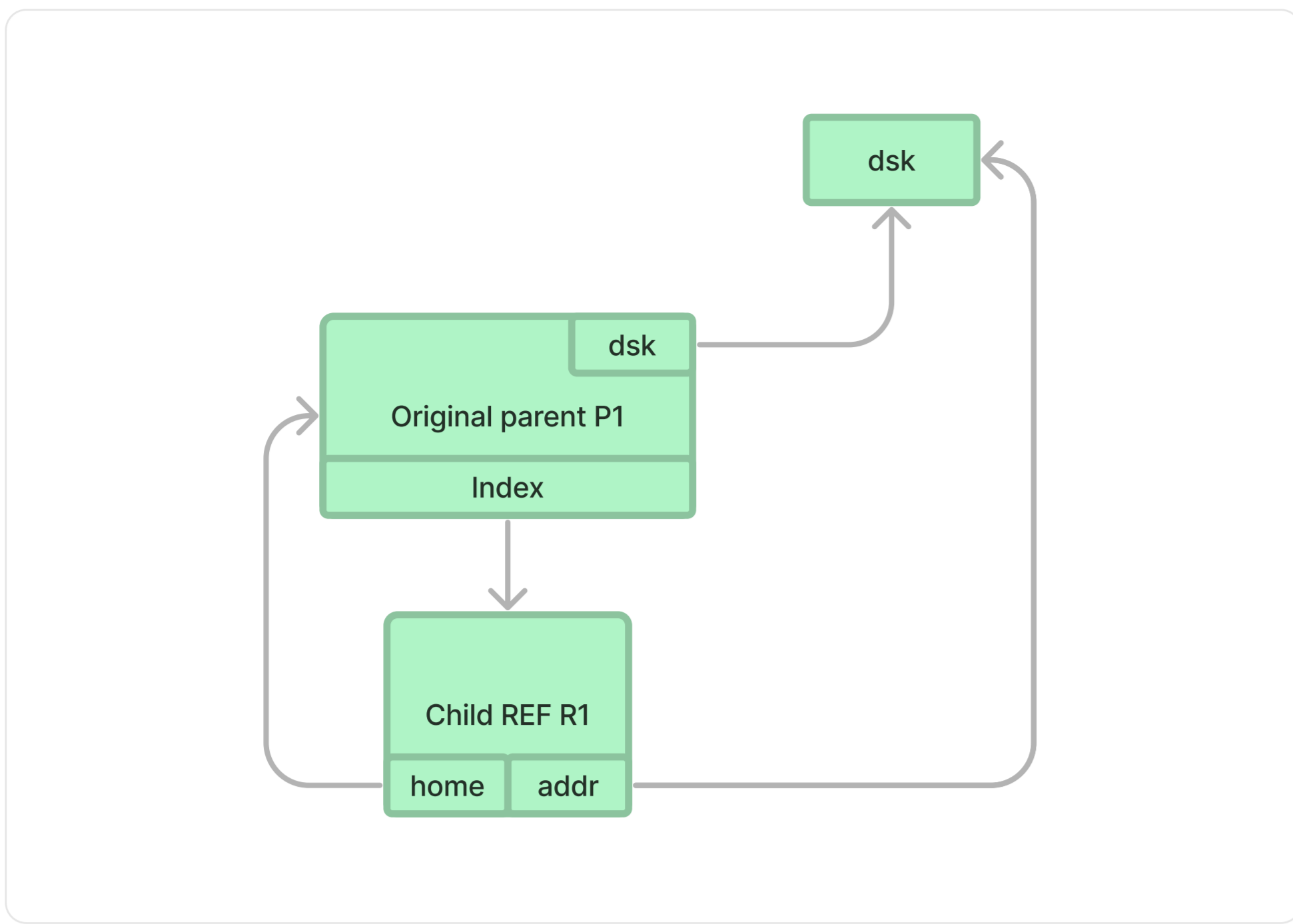
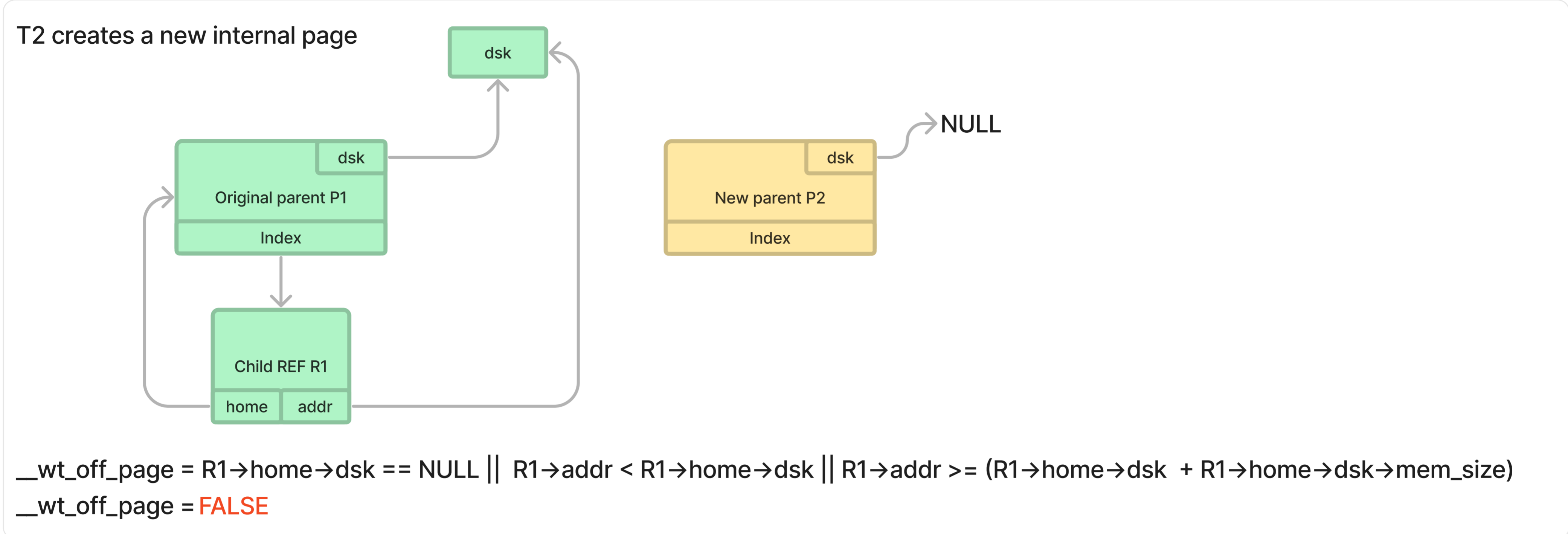


State 1



State 2

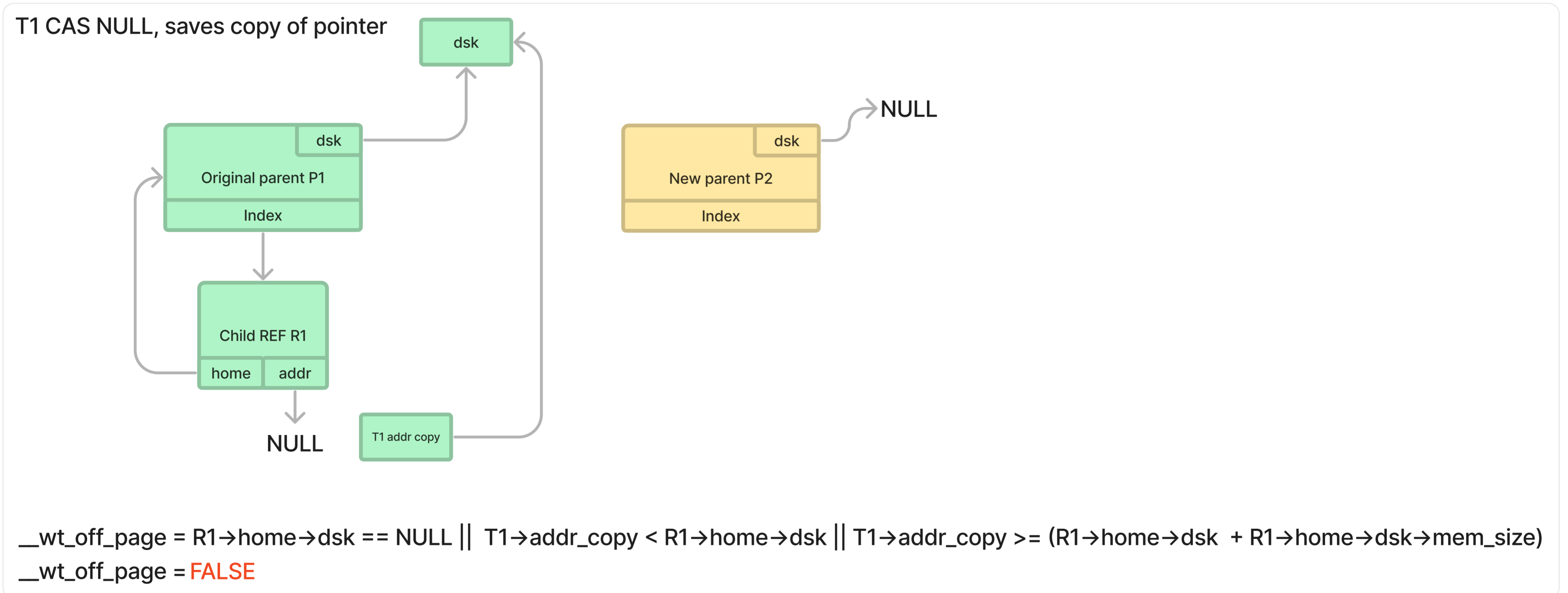
T2 creates a new internal page



$\_wt\_off\_page = R1 \rightarrow home \rightarrow dsk == NULL \parallel R1 \rightarrow addr < R1 \rightarrow home \rightarrow dsk \parallel R1 \rightarrow addr \geq (R1 \rightarrow home \rightarrow dsk + R1 \rightarrow home \rightarrow dsk \rightarrow mem\_size)$   
 $\_wt\_off\_page = \text{FALSE}$

State 3

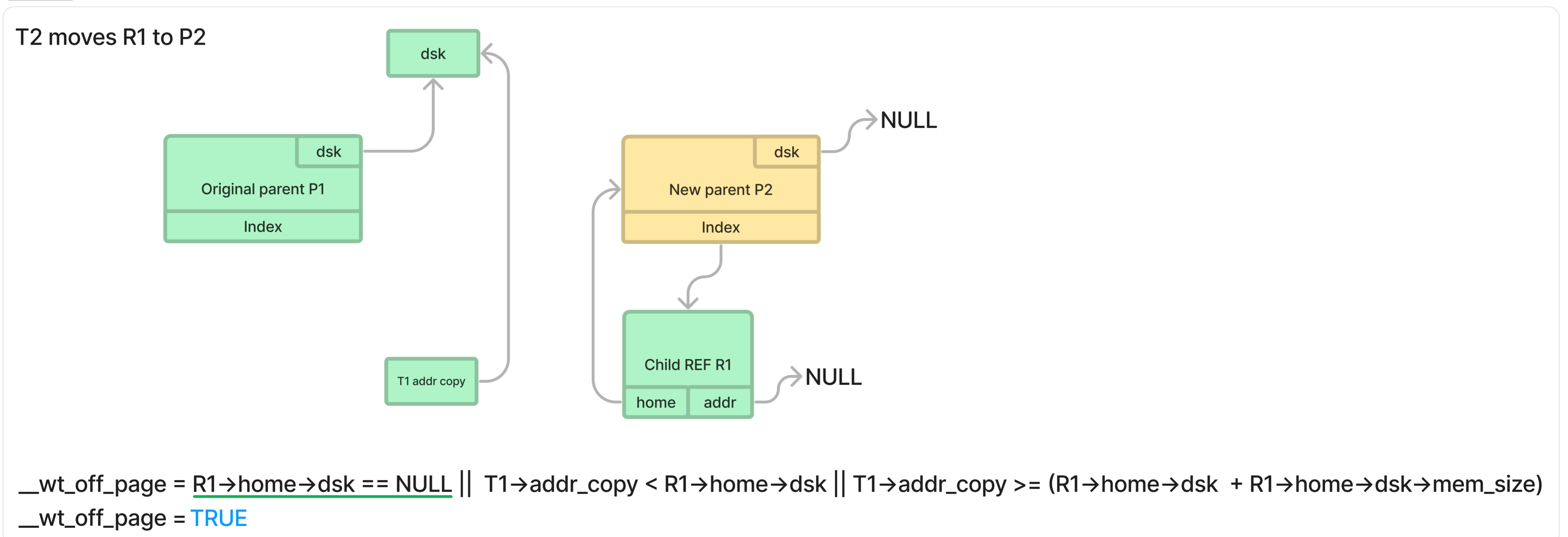
T1 CAS NULL, saves copy of pointer



$\_wt\_off\_page = R1 \rightarrow home \rightarrow dsk == NULL \parallel T1 \rightarrow addr\_copy < R1 \rightarrow home \rightarrow dsk \parallel T1 \rightarrow addr\_copy \geq (R1 \rightarrow home \rightarrow dsk + R1 \rightarrow home \rightarrow dsk \rightarrow mem\_size)$   
 $\_wt\_off\_page = \text{FALSE}$

State 4

T2 moves R1 to P2



$\_wt\_off\_page = R1 \rightarrow home \rightarrow dsk == NULL \parallel T1 \rightarrow addr\_copy < R1 \rightarrow home \rightarrow dsk \parallel T1 \rightarrow addr\_copy \geq (R1 \rightarrow home \rightarrow dsk + R1 \rightarrow home \rightarrow dsk \rightarrow mem\_size)$   
 $\_wt\_off\_page = \text{TRUE}$

State 5

T1 tries to free addr\_copy which it cant. System crashes...

